

UNBEATABLE ATX 3.1 PSU

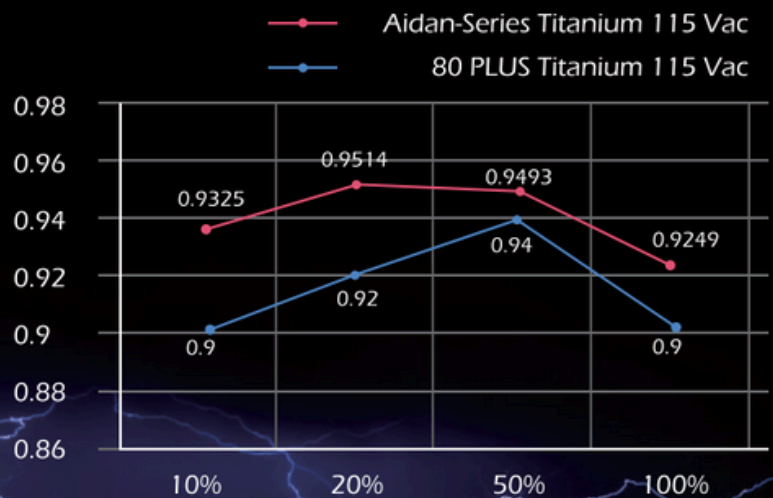


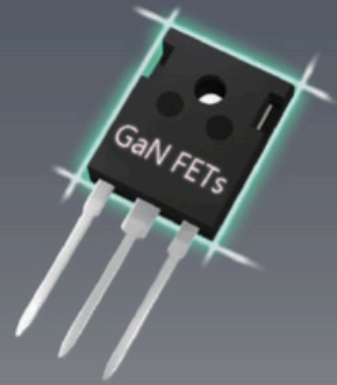
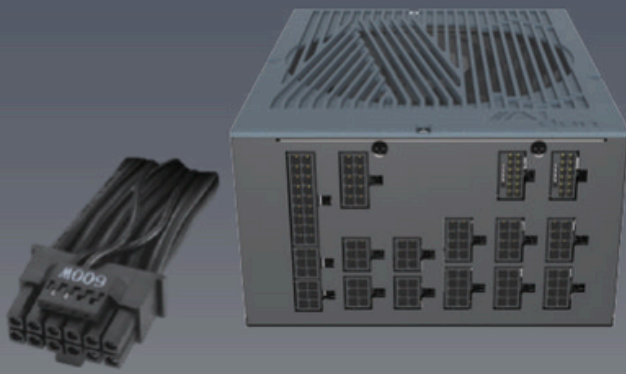
Titanium Series : Aidan T1616/ T1500/ T1350 (115V)
Platinum Series : Aidan P2000/ P1800 (230V)
/ P1616/ P1500/ P1350 (115V)

80 PLUS and Cybenetics Titanium ETA Certified Efficiency Up To 94.93%

With the highest wattage 1616W ATX 3.1 power supply in the market, Aidan-T1616 not only achieves the highest efficiency of 94.93% (115VAC) under typical load, but also has the highest average efficiency performance of 94.19%.

Aidan series ATX3.1 power supplies are aimed at PC gaming, e-sports, cryptocurrency mining and other consumer computing markets that require ultra-high power.





ATX 3.1, PCIe Gen 5.1

Wentai Technology has updated its range of high wattage PSUs with models following the ATX 3.1 standard. Designed with a native 12V-2X6 connector interface, the ATX 3.1 Titanium Power series is built for the next-gen PCIe 5.1 graphics cards.

Adopt Industrial Grade GaN Components

Wentai used industrial grade GaN to push the limit of power efficiency. It makes product smaller and reduces the power loss, so the power consumes less energy and has better heat resistance to last longer.

Titanium Efficiency

80 PLUS & Cybenetics Titanium ETA certified;
Industry's highest power efficiency up to 94.93%

Quiet

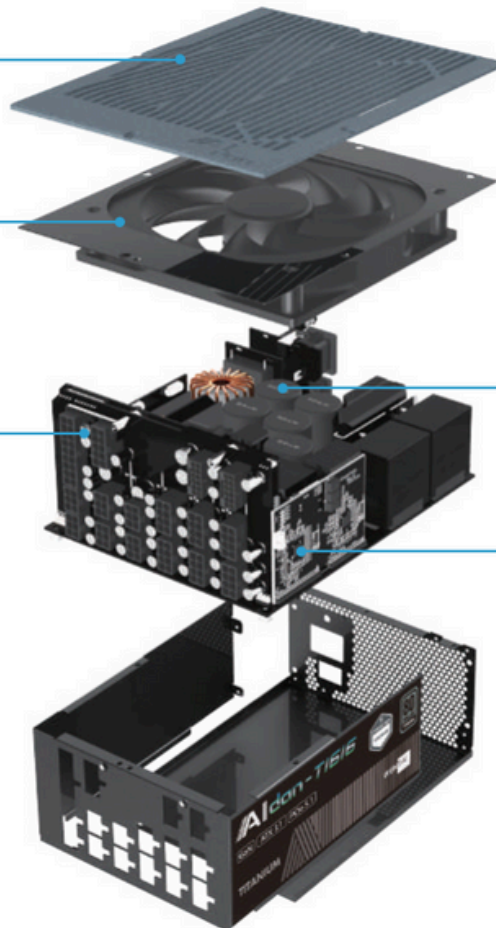
Low noise fan system

Fully Modular

Good cable management;
Improve power efficiency

Protections

OVP、OPP、UVP、OTP、SCP、OCP



Green

RoHS lead-free materials,
comply with EuP and
Energy Star Standard

Safety

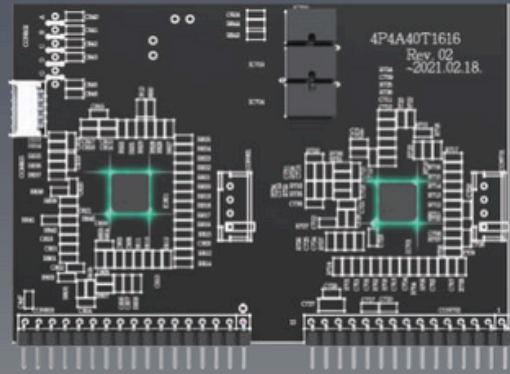
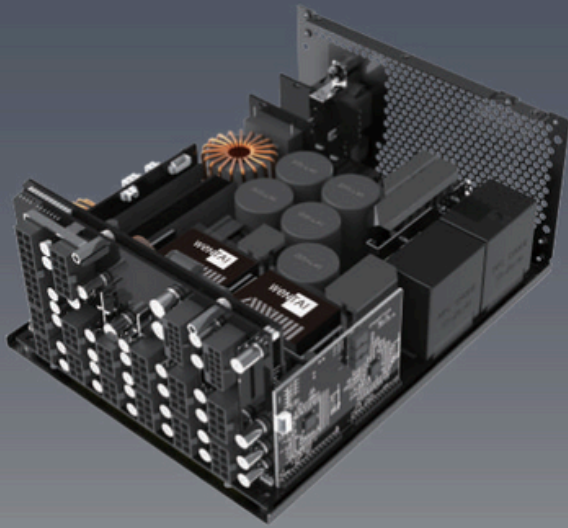
Meet cTÜVus, TÜV, CB, CE, CCC,
FCC, BSMI compliance

Ultra Stable

Apply high performance
Japanese capacitors,
rated at 105°C

AI Digital Control

Digital PFC/ Digital LLC
control, lightning fast response



Top-tier Japanese Capacitor

Use highly reliable Japanese capacitors rated at 105°C. Low ESR and low impedance capacitors improve system stability and reliability.

Excellent Efficiency

Near-perfect load regulation and low ripple levels provide excellent power performance. In addition, it's possible to adjust the voltage levels on the rail that are digitally controlled.

Output Rating

		Titanium PSU				
		115V				
		100 - 240 Vac, 12.5 -15A, 50 -60Hz				
		Aidan-T1616		Aidan-T1500		Aidan-T1350
AC Input Model		Vac ≥ 115	Vac < 115	Vac ≥ 115	Vac < 115	-
Output Current	+12V	134.7A	108.3A	125A	108.3A	112.5A
	+5V	20A	20A	20A	20A	20A
	+3.3V	20A	20A	20A	20A	20A
	-12V	0.3A	0.3A	0.3A	0.3A	0.3A
	+5VSB	3A	3A	3A	3A	3A
	Total Power	1616W	1350W	1500W	1350W	1350W

		Platinum PSU		Platinum PSU				
		230V		115V				
		200-240V, 8.5-9.5A, 50-60Hz		100 - 240V, 13 - 15.5A, 50-60Hz				
		Aidan-P2000	Aidan-P1800	Aidan-P1616		Aidan-P1500		Aidan-P1350
AC Input Model		-	-	Vac ≥ 115	Vac < 115	Vac ≥ 115	Vac < 115	-
Output Current	+12V	166.7A	150A	134.7A	108.3A	125A	108.3A	112.5A
	+5V	20A	20A	20A	20A	20A	20A	20A
	+3.3V	20A	20A	20A	20A	20A	20A	20A
	-12V	0.3A	0.3A	0.3A	0.3A	0.3A	0.3A	0.3A
	+5VSB	3A	3A	3A	3A	3A	3A	3A
	Total Power	2000W	1800W	1616W	1350W	1500W	1350W	1350W

Specifications

Titanium Model	Aidan-T1616	Aidan-T1500	Aidan-T1350
Power	1616W	1500W	1350W
Input Voltage	100-240V		
80 PLUS Efficiency	90-94%		
	90% at 10% load		
	92% at 20% load		
	94% at 50% load		
	90% at 100% load		
Intel Power Design Guide	EPS Ver. 2.92		
CPU Platform Support	Compatible with the latest Intel & AMD Chipsets		
PFC	Active PFC		
Appearance	Compact design with efficient convection heat dissipation		
Fan Type	135 mm silencio double ball bearing fan		
Dimensions	L195 mm x W150mm x H 86mm		
Circuit Protection	OVP, OCP, OPP, SCP, UVP, OTP		
Safety	cTÜVus, TÜV, CB, CE, CCC, FCC, BSMI		
Operation Temperature	0-50°C		
Warranty	10 years warranty*		

* Several warranty solutions are available for our customers to choose from.

Platinum Model	Aidan-P2000	Aidan-P1800	Aidan-P1616	Aidan-P1500	Aidan-P1350
Power	2000W	1800W	1616W	1500W	1350W
Input Voltage	200-240V		100-240V		
80 PLUS Efficiency	90-94%		89-92%		
	92% at 20% load		90% at 20% load		
	94% at 50% load		92% at 50% load		
	90% at 100% load		89% at 100% load		
Intel Power Design Guide	EPS Ver. 2.92				
CPU Platform Support	Compatible with the latest Intel & AMD Chipsets				
PFC	Active PFC				
Appearance	Compact design with efficient convection heat dissipation				
Fan Type	135 mm silencio double ball bearing fan				
Dimensions	L195 mm x W150mm x H 86mm				
Circuit Protection	OVP, OCP, OPP, SCP, UVP, OTP				
Safety	cTÜVus, TÜV, CB, CE, CCC, FCC, BSMI				
Operation Temperature	0-50°C				
Warranty	10 years warranty*				

* Several warranty solutions are available for our customers to choose from.



Headquarters
WENTAI TECHNOLOGY CO.

8F, No.133, Lane 235, Bao-qiao Road,
Xindien Dist, New Taipei City, Taiwan

+ 886-2-8919-2318
+ 886-2-8919-2320
inquire@a-wentai.com

www.wentaitek.com

WENTA TECHNOLOGY (SHENZHEN) CO., LTD

New Industry Zone, ShiSan Village, No.154,
JunXin Road, NiuHu, Guanlan, Shenzhen City, China

WENTAI ELECTRONIC (SU ZHOU) CO., LTD

No.218, You Yi Road, Friendship Industrial Zone,
Songling Town, Wu Jiang, Jiangsu, China

