

Unbeatable ATX3.0 Titanium Power

1616W · 1500W · 1350W



Wentai Technology is a manufacturer offering customized products and OEM/ODM service based in Taiwan and China.

Specialize in the following:

LED Lighting & Driver

Bluetooth Smart Lighting

ATX Power Supply

Electronics PCB Assembly



About Us



Wentai Technology, a technology-focused enterprise, prioritizes superior service. With ongoing enhancements in technical prowess and quality control, the company remains dedicated to environmental sustainability.

Service Location

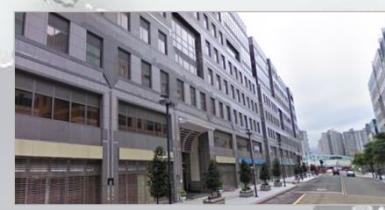
- Headquarters
- R&D center
- Production

TAIWAN



ERP

HQ Taipei
Wentai Technology Corp.
1983~ | 50 Employees
(**R&D** 35 Staffs)



MES ERP APS

Taipei Factory
Kuang-E Technology
1994~ | 120 Employees
*2020 merged by Wentai Tech.



CHINA

- 3** factories
- 850+** employees
- \$60+** USD million /Annual Turnover

ERP APS MES Management System

Shenzhen Factory
Wenta Technology
1999~ | 400 Employees



ERP APS

Suzhou Factory
Wentai Electronic
2000~ | 280 Employees



ERP APS

Market Distribution

Over 80% clients from Japan, also Germany and Taiwan

Wentai provides top-tier custom products to leading lighting and electronics firms in Japan and Europe



Aidan T1616 ATX 3.0 Titanium Power Key Features

Titanium Efficiency

80 PLUS and Cybenetics ETA Titanium certified, Efficiency up to 94.93%, **Best in the market**

Quiet

Low noise fan system

Safety

Meet cTÜVus, TÜV, CB, CE, CCC, FCC, BSMI compliance

Protections

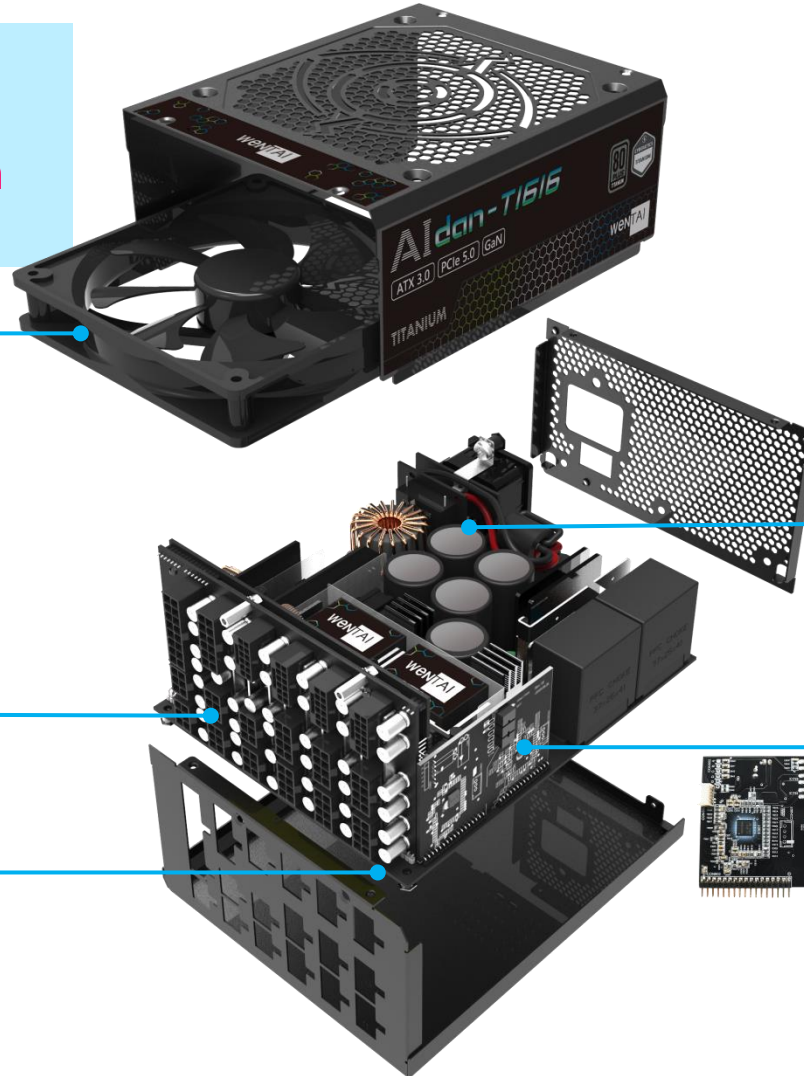
OVP、OPP、UVP、OTP、SCP、OCP

Fully Modular

Good cable management

Made in Taiwan

Trusted quality



Upgrade Support

Meet ATX 3.0 and PCIe Gen 5 standard

GaN Usage

Less energy consumption and better resistance to heat

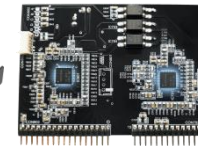


Ultra Stable

100% Japanese brand capacitor, rated at 105°C

AI Digital Control

Digital PFC/ Digital LLC control, lightning fast response



Green

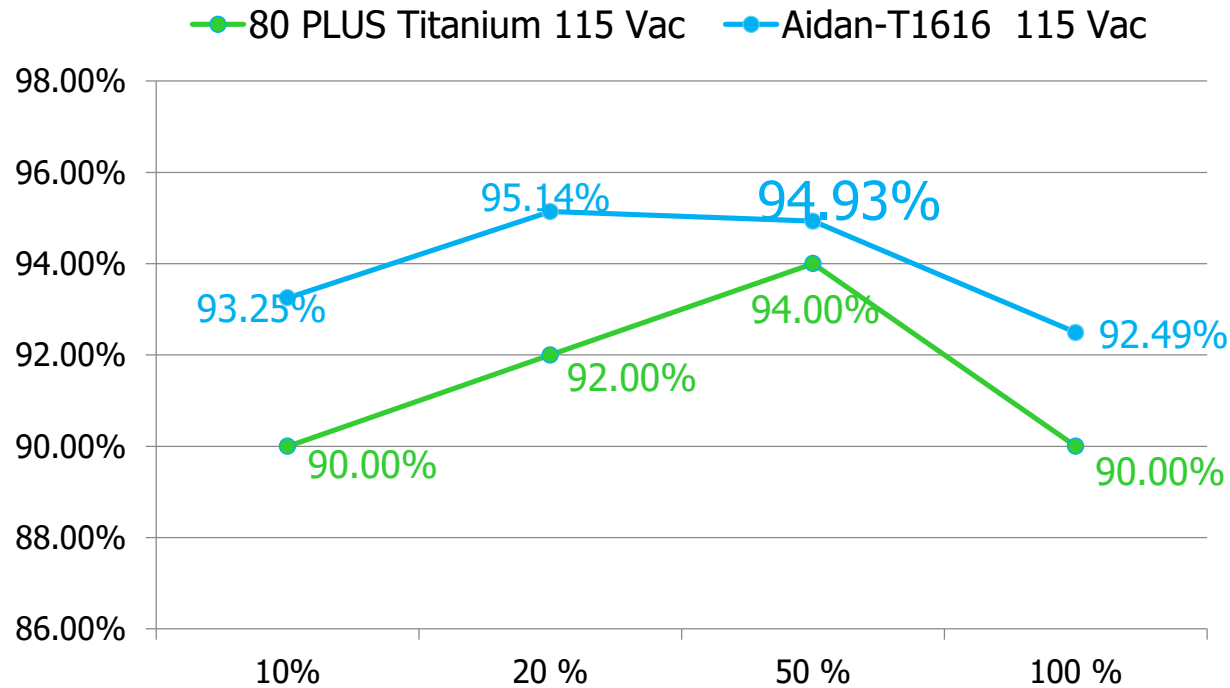
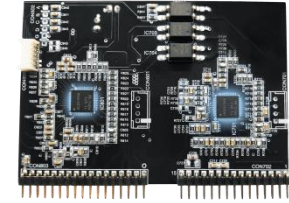
RoHS lead-free materials, comply with EuP and Energy Star Standard

Aidan T1616 Output Rating

Aidan-T1616 Output Rating (額定輸出)						
AC Input (AC輸入)	100-240V _{AC} , 15A, 50-60Hz					
DC Output (DC輸出)	+12V		+5V	+3.3V	-12V	+5VSB
	V _{AC} ≥ 115	V _{AC} < 115				
Max Output Current (最大輸出電流)	134.7A	108.3A	20A	20A	0.3A	3A
Max Combined Power (最大輸出功率)	1616W	1350W	100W	100W	3.6W	15W
Total Power (總瓦數)	1616W					



Dual Certified Titanium Power Efficiency



Average Efficiency 94.19%



Source: 80PLUS TEST Report, Nov 9, 2018



EFFICIENCY AND NOISE LEVEL CERTIFICATIONS

Anex

Wentai Aidan 1616W

Lab ID#: WT20161004
 Receipt Date: Jan 2, 2020
 Test Date: Jan 23, 2020

Report: 20PS1581A
 Report Date: Jan 29, 2020

DUT INFORMATION		DUT SPECIFICATIONS	
Brand	Wentai	Rated Voltage (Vrms)	100-240
Manufacturer (OEM)	Wentai Technology	Rated Current (Arms)	16
Series	Aidan	Rated Frequency (Hz)	50-60
Model Number	T1616	Rated Power (W)	1616
Serial Number		Type	ATX12V
DUT Notes		Cooling	140mm Double Ball-Bearing Fan (AGE14025B12U)
		Semi-Passive Operation	✓
		Cable Design	Fully Modular

Source: Cybenetic TEST Report, Jan 29, 2020



Why Choose Wentai Technology

Catering to eSports Pros and Crypto Miners

Reliable support for operating Graphics Cards with stand-alone power:

4 x RTX3080 TI or 3 x RTX3090

9 x RTX3060 TI or 2 x RTX3090 TI

STABLE QUALITY

EXCEPTIONAL POWER EFFICIENCY

Uninterrupted 24-hour Operation

Consistently stable power efficiency, surpassing the performance of paralleled low-wattage power supplies

MADE IN TAIWAN

MODULAR ARCHITECTURE

No messy wires

Internal components follow a modular design, eliminating tangled wires for a clean and compact arrangement

Professional and rich experience

Involved in significant Titanium and Platinum power design projects for top-tier brands in the past

EXPERIENCED R&D TEAM

UNIQUE & COMPACT DESIGN

AI controller design is flexible to adjust Spec

- The AI controller design technology allows versatile specification adjustments. Its intelligent design is both adaptable and difficult to replicate
- 1616W power within a compact form factor of under W150 x L183 mm

Wentai ATX Power Supply Deployment Plan

PCIe 5.0 ATX 3.0

G GaN Based
C Cool MOS



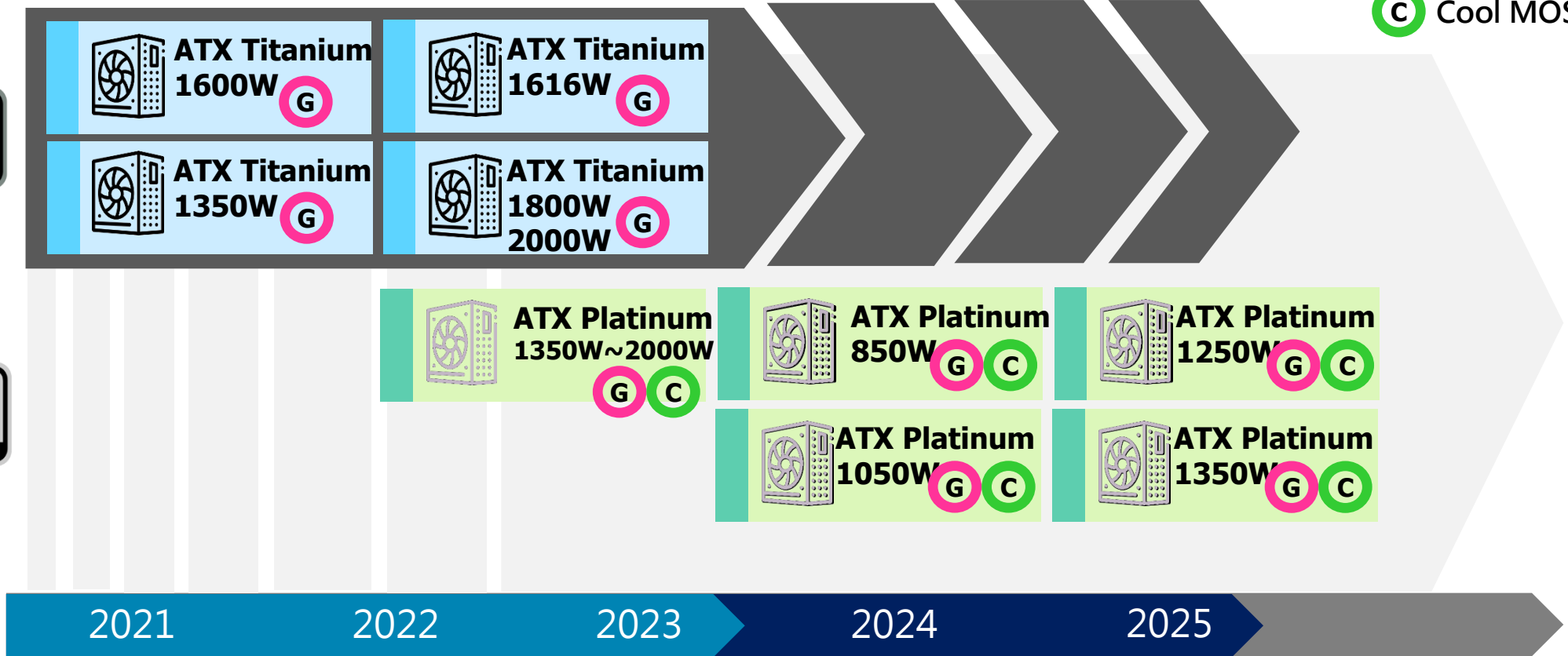
80 PLUS TITANIUM

ATX Titanium
184x150x86mm



80 PLUS PLATINUM

ATX Platinum
184x150x86mm






wenTAI

Contact Us

 Sally Lee / Sales Manager

 +886-2-89192318

 sallylee@a-wentai.com

 <https://www.wentaitek.com>

